

# FACT SHEET



## Location

Located in the heart of the city, next door to „Planten un Blumen“ botanical gardens and with direct access to the international Congress Center Hamburg, CCH, lies Hamburg's tallest building, the Radisson SAS hotel. Travellers find the hotel most convenient to reach, as it is next to Dammtor international train station, 8 miles away from the airport and provides a huge car park. It only takes 5 minutes to walk to the trade fair grounds, the casino and the opera as well as to the elegant shopping arcades.

## Rooms

Most of the 560 first-class rooms offer a stunning view of the city and the harbour. All rooms are equipped with free broadband internet access via wireless LAN, satellite TV, radio, voicemail telephone, air-condition, trouser press, hair dryer and mini-bar. The concept of the Business Class rooms includes Super-Breakfast Buffet, bathrobe, daily newspaper, pay-TV, safe and a "Nespresso" machine for freshly brewed coffee.

## Swim & Sport

The heated indoor pool and well equipped fitness studio are part of the extensive health club. Sauna and solarium is available as well, while massage and cosmetics complete the offer. The adjacent park and the Alster lake are popular places to meet for jogging.

## Restaurants and Bars

In the renowned Trader Vic's Restaurant and Mai Tai Bar one can almost smell the South Sea breezes due to the original exotic setting. Polynesian / French specialties are prepared in a show kitchen and guarantee an unforgettable taste experience. The Restaurant Vierländer Stuben is open for regional dishes and the Super Breakfast Buffet. Throughout the day the Park-Bistro is a popular meeting place for delicious snacks, an afternoon tea, coffee, pastries or a refreshing draught beer.

Top of Town is Hamburg's highest located bar & lounge, perfect to enjoy a cocktail and the stunning view of the illuminated city.

## Meetings & Events

9 air-conditioned function rooms, most of them on a separate floor, along with the extensive foyer add up to 1.620 sq.m. and host up to 1.000 guests. The convertible ballroom, natural light, state-of-the-art equipment such as wireless LAN as well as the professional service and organization are some of the standards. Direct access to the Congress Center Hamburg, CCH, one of Europe's biggest and most modern convention areas, provides flexibility with additional nearby capacities.

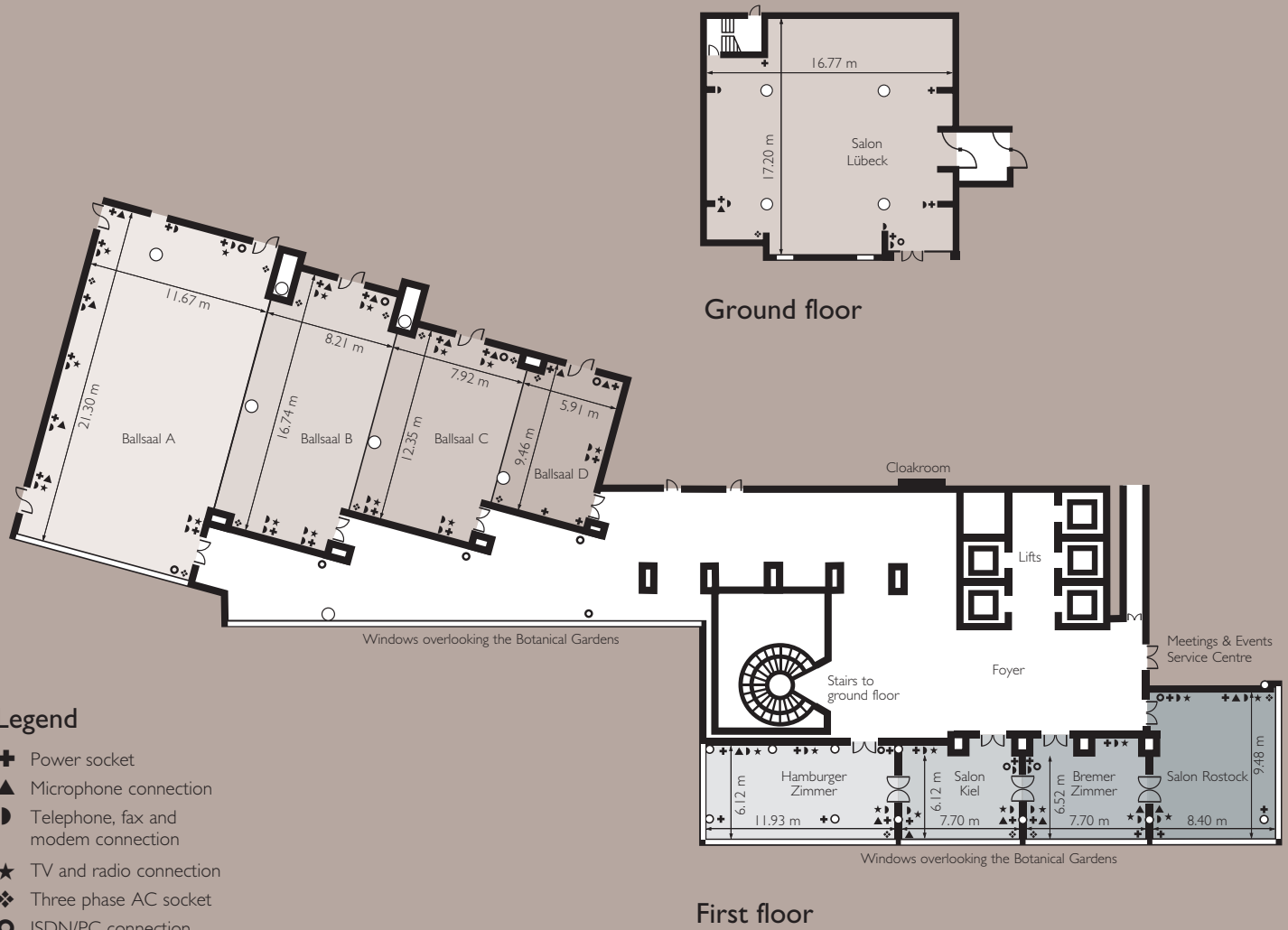
VDR Certified Conference Hotel.

*Certified Conference Hotel*  
ZERTIFIZIERTES TAGUNGSHOTEL

Eine Initiative von VDR – DGVM – GCB

## Radisson SAS Hotel

Marseiller Straße 2, D-20355 Hamburg, Germany  
Tel: +49 (0)40 3502 0, Fax: +49 (0)40 3502 3530  
info.hamburg@radissonsas.com  
hamburg.radissonsas.com



### Legend

- ⊕ Power socket
- ▲ Microphone connection
- Ⓜ Telephone, fax and modem connection
- ★ TV and radio connection
- ❖ Three phase AC socket
- ISDN/PC connection

Wireless LAN is available throughout the entire building

	Block	Banquet	Banquet with dancing	Classroom style	Theatre style	U-shaped seating	Square	Reception	Height of room	Room depth x width	Floor area m <sup>2</sup>	Height of door	Width of door	Daylight	Can be darkened
<b>First floor</b>															
Ballsaal A	56	150	100	135	202	70	88	200	3.00	21.30 x 11.67	246	2.92	1.57	✓	✓
Ballsaal B	46	90	50	75	112	50	70	100	3.00	16.74 x 8.21	133	2.92	1.57	-	✓
Ballsaal C	30	50	30	53	80	40	54	80	3.00	12.35 x 7.92	96	2.92	1.57	-	✓
Ballsaal D	20	30	20	25	48	20	34	40	3.00	9.46 x 5.91	55	2.92	1.57	-	✓
Ballsaal A + B	-	240	170	210	315	-	-	300	3.00		379	2.92	1.57	✓	✓
Ballsaal B + C	-	140	110	128	193	-	-	180	3.00		228	2.92	1.57	-	✓
Ballsaal C + D	-	80	70	86	120	-	-	120	3.00		150	2.92	1.57	-	✓
Ballsaal A + B + C	-	290	230	263	395	-	-	340	3.00		474	2.92	1.57	✓	✓
Ballsaal B + C + D	-	170	130	161	240	-	-	220	3.00		283	2.92	1.57	-	✓
Ballsaal A + B + C + D	-	330	260	296	445	-	-	420	3.00		529	2.92	1.57	✓	✓
Hamburger Zimmer	24	30	30	35	53	25	38	50	3.00	11.93 x 6.12	71	2.07	1.57	✓	✓
Salon Kiel	18	20	20	20	33	18	22	30	3.00	7.70 x 6.12	46	2.07	1.57	✓	✓
Bremer Zimmer	18	20	20	20	33	18	22	30	3.00	7.44 x 6.52	46	2.07	1.57	✓	✓
Salon Rostock	26	50	50	40	60	25	40	55	3.00	8.40 x 9.48	79	2.07	1.57	✓	✓
<b>Ground floor</b>															
Salon Lübeck	40	130	100	100	150	50	68	150	3.00	17.20 x 16.77	261	2.80	1.70	-	✓