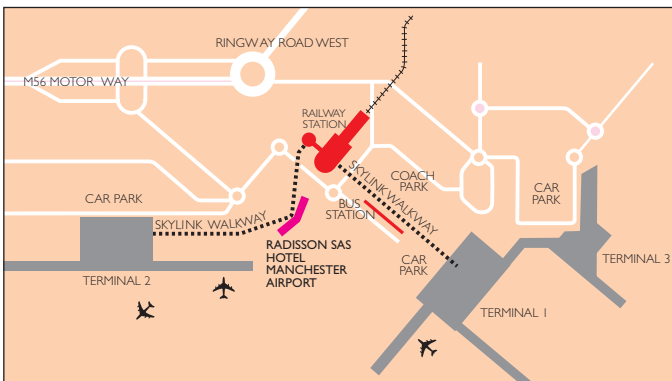


Radisson SAS Hotel Manchester Airport Manchester



CONTACT INFORMATION

Radisson SAS Hotel Manchester Airport
Chicago Avenue, Manchester, M90 3RA, England
Tel: +44-161-490-5000, Fax: +44-161-490-5100
reservations.airport.manchester@radissonsas.com

www.airport.manchester.radissonsas.com

LOCATION

- The only hotel directly linked to all terminals and the rail and coach stations.
- Directly connected to the airport's Skylink, a high-tech elevated passenger walkway.
- Manchester city centre just 19 km / 12 miles away. 20 minutes by car and train.

FACILITIES

- 360 air-conditioned standard and Business Class rooms, 8 suites and 2 family rooms, non-smoking rooms and specially equipped rooms for the disabled.
- Each room has a modem port, safe, satellite TV and mini bar.
- Wireless High Speed internet in whole hotel.
- You have a choice of; Oriental, Scandinavian, Maritime and Italian room styles.
- Leisure facilities, including indoor pool, sauna, steam bath, gymnasium and beauty salon.
- The award-winning Phileas Fogg Restaurant offers a wide variety of international contemporary cuisine combined with a stunning view over the airport's skyline.
- Runway Brasserie offer less formal dining, ideal for a quick bite in a relaxing atmosphere.
- Passe Partout Bar, the perfect meeting place.

MEETINGS

- 1,585 total m² in 31 meeting rooms.
- Largest room: 338 m²
- Video conferencing, high-speed Internet access, wireless Internet access.
- Ceiling height in largest room: 3.8 m
- Business Centre.

CITY FACTS

- **The Trafford Centre:** One of the most exciting and innovative shopping malls in Europe. The Centre consists of over 280 shops a variety of Restaurants and a Cinema Complex. Situated on the edge of the city, it is only 15 minutes from the hotel.
- **Urbis is a new kind of museum** exploring life in different cities of the world. Urbis is a new, shimmering, glass building rising high above Manchester. Inside, state-of-the-art interactive displays and exhibits lead you through an inspirational journey exploring life in different cities of the world, focusing especially on Manchester, Los Angeles, Sao Paulo, Singapore, Paris and Tokyo. Your visit begins with sky glide in The Glass Elevator, with the city as backdrop, you then explore four cascading themed floors of fascinating, intriguing and entertaining exhibits.
- **Imperial War Museum:** The Museum, situated on the banks of the Manchester Ship Canal in Trafford, offers people of all ages thought-provoking displays and direct access to the Museum's collections to gain a greater understanding of the enormous impact of war on the twentieth and twenty-first centuries.